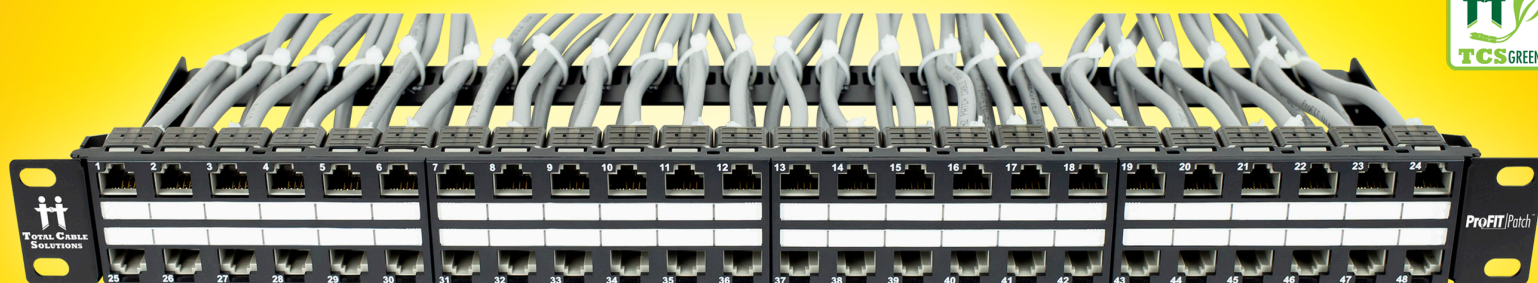




ProFIT Patch™

Premium Copper Panels

48 Port 19" Rackmount Keystone Jack Panel



* Keystone jacks sold separately

P/N: PRO-CPP-BLANK-1U-48

Cable Management

Built-in rear cable management designed for hyperscale extreme density

Standard-Size Jacks

Designed for standard-size, non-proprietary keystone jacks

Port Labeling

Silk-screened labeling on front and back cable management for quick port identification. Removable port labeling strips for easy access

Flush Fit

Keystone jacks fit flush into ports to protect them from damage



2019.07.02

Specifications

- 1.5 mm SPCC steel
- Dimensions: 19" x 1.75" x 6"
- Color: black
- Designed for standard size, non-proprietary keystone jacks
- 24 zip ties included

OPTIONAL ProFIT™ RAPID TERMINATION TOOL and KEYSTONE JACKS



OPTIONAL CABLE MANAGER



P/N: PRO-CBL-MGR-1U-5PR

- Fits any standard 19 in. rack and cabinet
- Heavy gauge 1.5 mm metal with flexible, plastic D-rings
- Radius-edged D-rings to protect cable