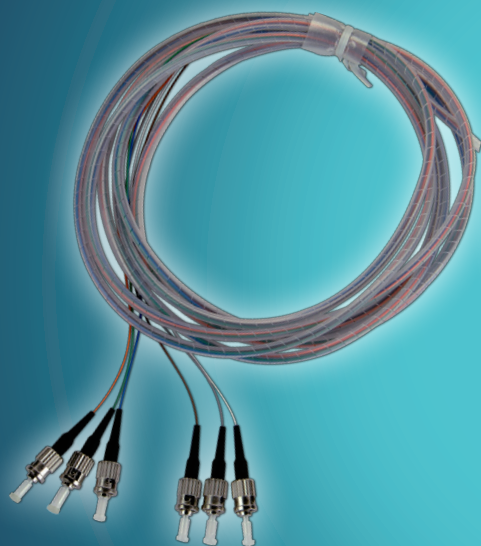


**TOTAL CABLE
SOLUTIONS**

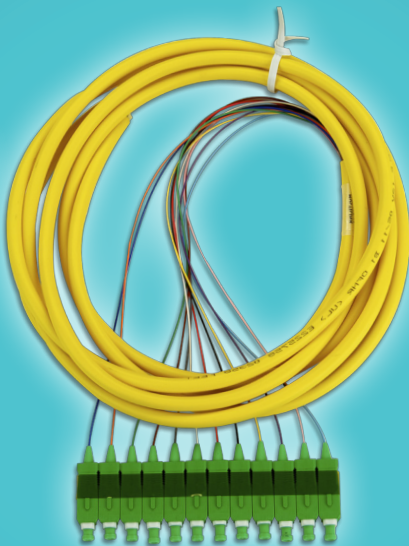
FIBER PIGTAILS

by Total Cable Solutions



Spiral Wrap

Easily move cables in and out
creating a cleaner install



Distribution

Higher protection of fiber and perfect
when being exposed outside of enclosure



Ribbon

Faster field termination

Industry Standard

Telcordia GR-326-CORE
TIA/EIA-568-C.3
IEE802.3z
RoHS Compliant

Available Fiber Counts

• 1, 6, and 12 stocked
• 24, 48, 72, 96, and 144

Jackets

Riser (OFNR)
Plenum (OFNP)
LSZH
Spiral Wrapped

Fiber Construction

• Loose Tube 900um
• Ribbon 250um

Features

- Low insertion loss
- Low back reflection
- Customer defined specification
- Test results included
- Terminations Types: LC, SC, FC, ST, MTRJ, MTP®/MPO
- Polish Types: SM UPC, SM, APC, and MM PC
- Standard stock length: 3 meters

- Fiber Types: BIF- Bend Insensitive Fiber (High Bend Radius)
> Plus Corning 62.5/125

> Corning Clearcurve 50/125 OM3

> Corning Clearcurve 50/125 OM4

> Corning Clearcurve SMF-28eXB (G.657.A1)



- Batch testing by Dorc Machine
- Customization: Length, packaging, bar coding, labeling, stocking programs, color and style of cable

Applications

Data Center • Telecommunications
Local Area Network • Fiber to the Home
Video Transmission • Fiber Optic Sensing
Test Instruments • CATV



Performance Specifications			
Fiber Type	SM		MM
Polishing	UPC	APC	PC
Insertion Loss	< 0.25dB	< 0.25dB	< 0.25dB
Return Loss	≥ 50dB	≥ 60dB	≥ 25dB
Durability	> 500 Matings		> 500 Matings
Core Diameter	9/125 μm		50/125 μm or 62.5/125 μm
Operating Temperature	Negative 20° C to Positive 70° C		
Storage Temperature	Negative 40° C to Positive 85° C		

Designed and packaged to simplify fusion splicing applications

Feature

Don't forget about TCS
Splice Sleeves and Trays

