

Fiber



# 3RU PREMIUM PATCH PANEL v2

by Total Cable Solutions



P/N: FPP-09-R3-05



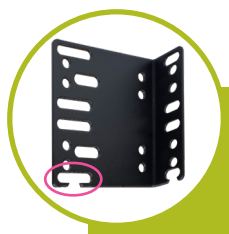
8mm Additional Space in Rear

Grommeted Non-captive Entry Point



Easy Release Latch

\* Can be purchased  
FULLY LOADED as pictured



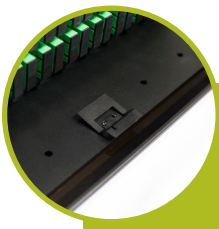
**Non-captive Mounting Ears** - Preinstall screws in rack, simply place rack on screws and tighten.



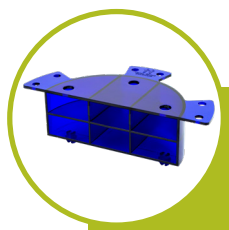
**Nylon Fiber Manager Loops** - Additional locations for more cable management options. Strong nylon construction with smooth rounded corners. Stress free fiber entry. Snaps into place securely, no screws. Includes 10.



**Optional Locking Kit (FPP-LOCK-KIT)** - Kit includes locks for front and rear. Easy to add and place key kit in knockouts.



**E-Z Slide™ Tray Latch** - Slides out without snags. No push/pull mechanism in the way.



**NEW Blue Half-moon Cable Managers (FPP-CBL-MGR-KIT)** - No screws, snaps into place, stackable (first in industry). Includes 6.



**Optional Bulk Cable Protection (FPP-BLK-PRO)** - Holes designed for zip ties and Velcro®.

\* All LEXAN™ SABIC Global product names are trademarks or registered trademarks of SABIC Global

## MORE FEATURES





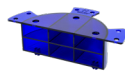
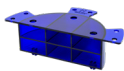
- Hinged front and rear doors
- Tinted LEXAN™ front cover
- Removable top panel and front faceplate
- Non-captive side and rear entries for trunks
- Standard 19" - 23" rack mountable unit

## SPECIFICATIONS

- Dimensions: standard 3RU height x 19" W x 8" D
- Material: 16AWG steel
- Coating: electrostatic polyester powder coat black paint

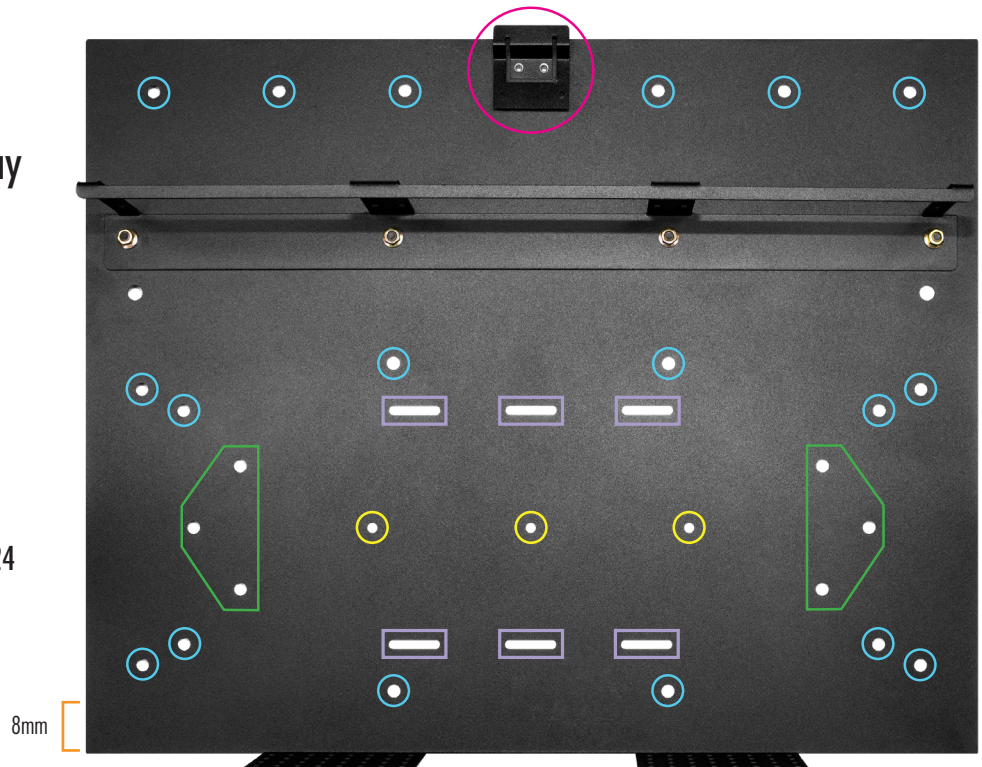
## WHAT'S INCLUDED

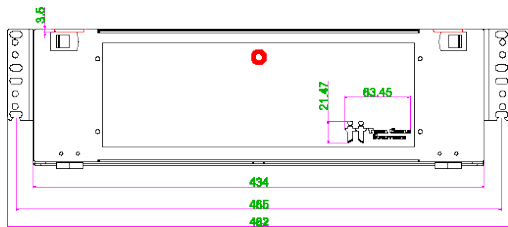
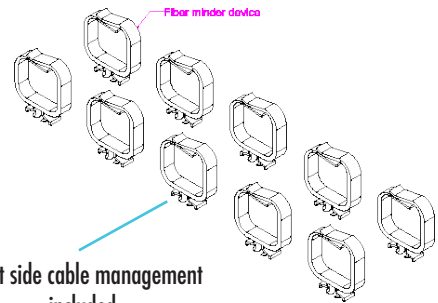
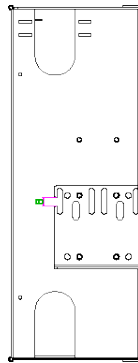
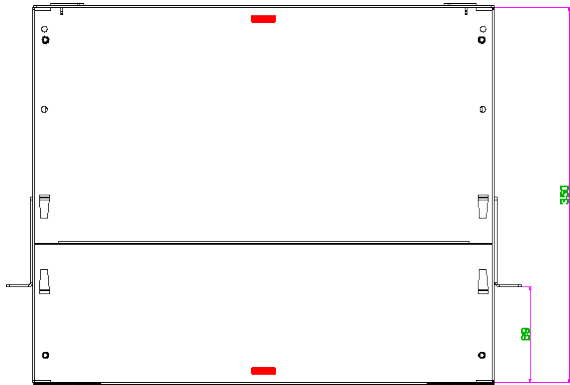
- 6 blue half-moon cable managers
- 4 pressure sensitive Velcro® wire mgmt. straps
- 1 ground lug kit
- 1 Velcro® splice tray tie down (2 meters)
- 10 nylon Fiber Manager Loops
- Mounting hardware: M6 screws, M6 cage nuts
- 4 zip ties
- Port identification label

3RU Premium Patch Panel	MAX. FIBER COUNT		ADAPTER PANEL CAPACITY	SPLICE TRAY CAPACITY			
	LC	SC/ST	LGX	Plastic	Metal		
	216	108	9	 ST-PA-24 * can screw down 8	 ST-M-24 9	 ST-M-24-8 9	 ST-M-36 6
				 N/A	N/A	 N/A	N/A

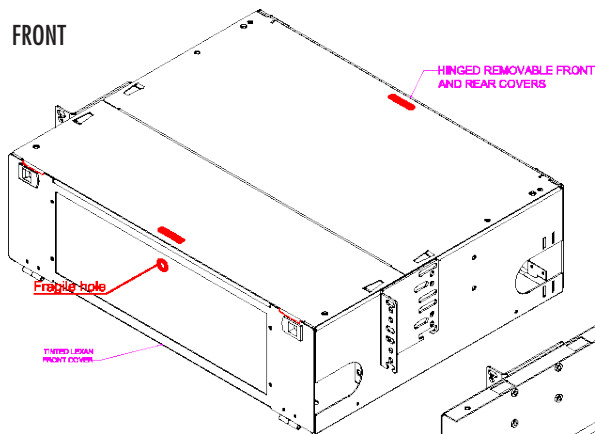
## Premium Patch Panel Sliding Tray

- Nylon Fiber Manager Loops
- E-Z Slide™ Tray Latch
- Blue Half-moon Cable Managers
- Velcro® Tie Downs
- Screw Down Holes for Splice Tray ST-PA-24
- 8mm Additional Space Behind Bulkhead

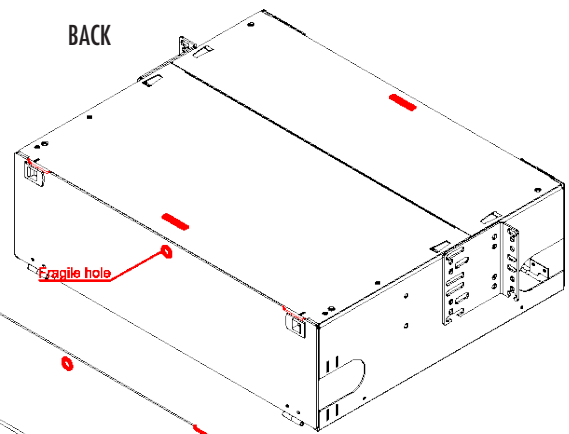




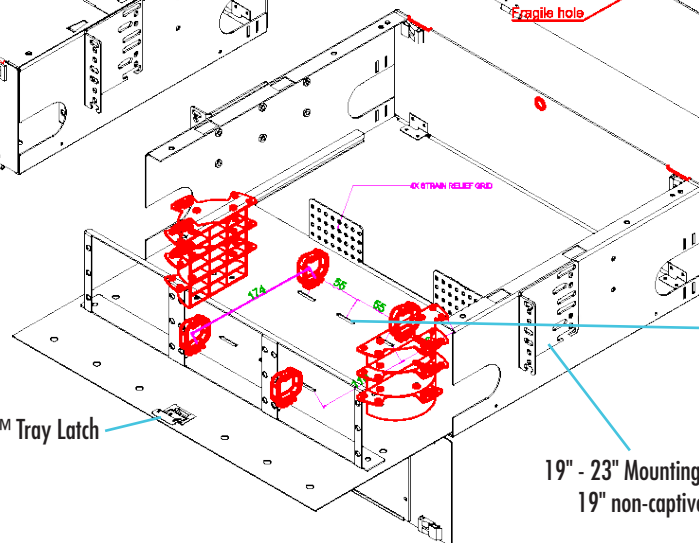
FRONT



BACK



E-Z Slide™ Tray Latch



Secure splice trays with  
Velcro® (included)

19" - 23" Mounting ear;  
19" non-captive