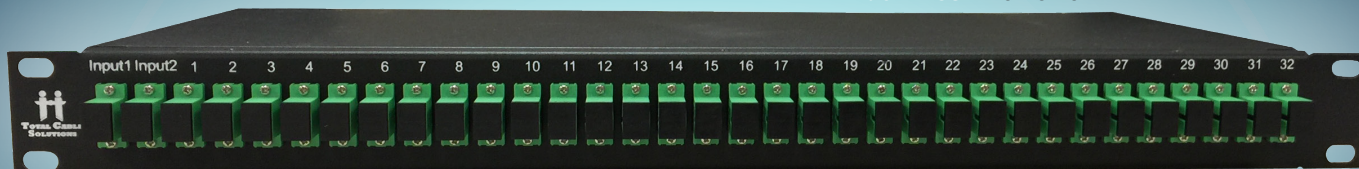


FIBER SPLITTERS

by Total Cable Solutions

19in Rack Mount FS-232-SA1-R



FS-104-SA1



FS-108-SA1



FS-216-SA1



FS-232-SA1

Standard LGX size

Custom Configurations

Bend Insensitive Fiber

Port Numbering

Can fit not only into Total Cable Solutions panels but into many other companies solutions

Total Cable Solutions can manufacture custom splitters to fit your unique needs

Dramatically decreases insertion loss

Silk screened port numbering for easy identification



Features

- Fits into any LGX size panel
- Assembled in the USA



Specifications

- Operating Temperature: -20~70°C
- Storage Temperature: -40~85°C
- Telcordia GR-1221 and GR-1209
- Max. Input Power: 300mW
- Connector Type: SC/APC, SC/UPC, LC/APC, LC/UPC
- Fiber Type: G.657.A1, BIF Corning Clearcurve XB
- Operating Wavelength: 1260~1650nm
- PDL: ≤ 0.3 dB
- Return Loss: ≥ 55 dB
- Directivity: ≥ 55 dB



1 x 4 LGX

- Insertion Loss: ≤ 7.4 dB
- Uniformity: ≤ 0.8
- 1 LGX Wide



1 x 8 LGX

- Insertion Loss: ≤ 10.7 dB
- Uniformity: ≤ 1.0 dB
- 1 LGX Wide

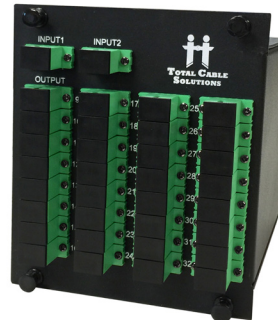


1 x 16

- Insertion Loss: ≤ 13.7 dB
- Uniformity: ≤ 1.2 dB
- 2 LGX Wide

2 x 16

- Insertion Loss: ≤ 14.2 dB
- Uniformity: ≤ 1.5 dB
- 2 LGX Wide



1 x 32

- Insertion Loss: ≤ 16.9 dB
- Uniformity: ≤ 1.0 dB
- 4 LGX Wide

2 x 32

- Insertion Loss: ≤ 17.5 dB
- Uniformity: ≤ 1.8 dB
- 4 LGX Wide

*19in Rack Mount also available (pictured on front)

ORDERING INFORMATION

FS - - -

1

2

3

4

1 INPUTS

1 = 1
2 = 2

2 OUTPUTS

4 = 04
8 = 08
16 = 16
32 = 32

3 TERMINATION

SA1 = SC APC, Simplex
SU1 = SC UPC, Simplex
LA1 = LC APC, Simplex
LU1 = LC UPC, Simplex

4 FORMAT

LGX = Blank
19 in Rack Mount = R

*Custom configurations available

Feature

PLC SPLITTER



- 1x4
- 1x8
- 1x16
- 1x32

Bend Insensitive Fiber

Compact

Budget Friendly

Unlike other brands, TCS splitters come standard with BIF fiber. Reduces breakage and insertion loss.

Easily fits into most splice trays

More economical than LGX splitters

